



NJ PATHWAYS

TO CAREER OPPORTUNITIES

Aligning Education to Build an Innovative Workforce

Welcome.

We ask that you please take this time to mute yourself, thank you.

In the chat, please provide your name, title and organization.

June

Manufacturing & Supply Chain Management Collaborative Meeting

Theme: Engaging Adult Learners

NJ Pathways to Career Opportunities

Manufacturing & Supply Chain Management

New Jersey's Community Colleges and the New Jersey Business and Industry Association have joined together to launch an unprecedented education and training pathways initiative.



GLENN BEST

Director, Manufacturing and Supply Chain Management Sectors Strategy & Workforce Partnerships

& JOHN MILLER

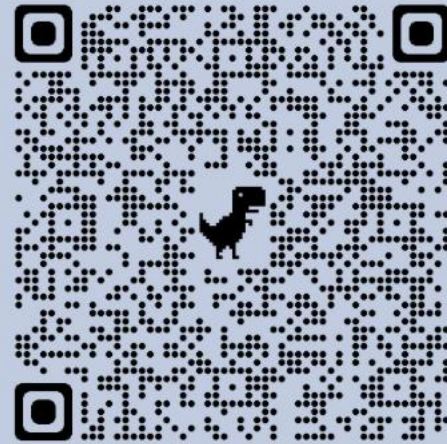
Program Manager, Technology and Innovation/Manufacturing and Supply Chain Management Sectors Workforce Partnerships



Give Us Your Feedback



FILL OUT THIS QUICK SURVEY
BASED ON YOUR EXPERIENCE
OF THIS MEETING



NJ PATHWAYS
TO CAREER OPPORTUNITIES
Aligning Education to Build an Innovative Workforce

Please use our hashtag:

#NJPathways

To share your participation in the
NJ Pathways to Career Opportunities
Industry Collaborative Meetings



**NJ PATHWAYS
TO CAREER OPPORTUNITIES**
Aligning Education to Build an Innovative Workforce



New Jersey's
Community Colleges



TODAY'S AGENDA:

- **Overview of GSETA with: *Kevin Kurdziel***
 - Kevin Kurdziel, President (GSETA)
- **Panel: *The Importance of Engaging Adult Learners and Best Practices***
 - Jeffrey Swartz, Executive Director (Camden County Workforce Development Board)
 - Jane Armstrong, Executive Director (Workforce Development Board of Morris, Sussex and Warren)
- **Pathways to Career Opportunities: *Partnership between Camden County Workforce Development Board & Camden County College***
 - Carol McCormick, Senior Account Executive Workforce Training/Continuing Education (Camden County College)
 - Jeffrey Swartz, Executive Director, (Camden County Workforce Development Board)



SPEAKER

Expert Speaker



KEVIN KURDZIEL

Director (Office of Career Opportunity), Chief Executive Officer (Middlesex County Workforce Development Board), and President (GSETA)

Overview of GSETA



PANEL DISCUSSION: ***THE IMPORTANCE OF ENGAGING ADULT LEARNERS AND BEST PRACTICES***



JEFF SWARTZ

Executive Director (Camden County
Workforce Development Board)



JANE ARMSTRONG

Executive Director (Workforce Development
Board of Morris, Sussex and Warren)

FACILITATED BY:



AARON FICHTNER

President (New Jersey Council of County Colleges)



KEVIN KURDZIEL

Director (Office of Career Opportunity), Chief
Executive Officer (Middlesex County Workforce
Development Board), and President (GSETA)

Pathways to Career Opportunities



CAROL MCCORMICK

Senior Account Executive Workforce Training/Continuing Education (Camden County College)



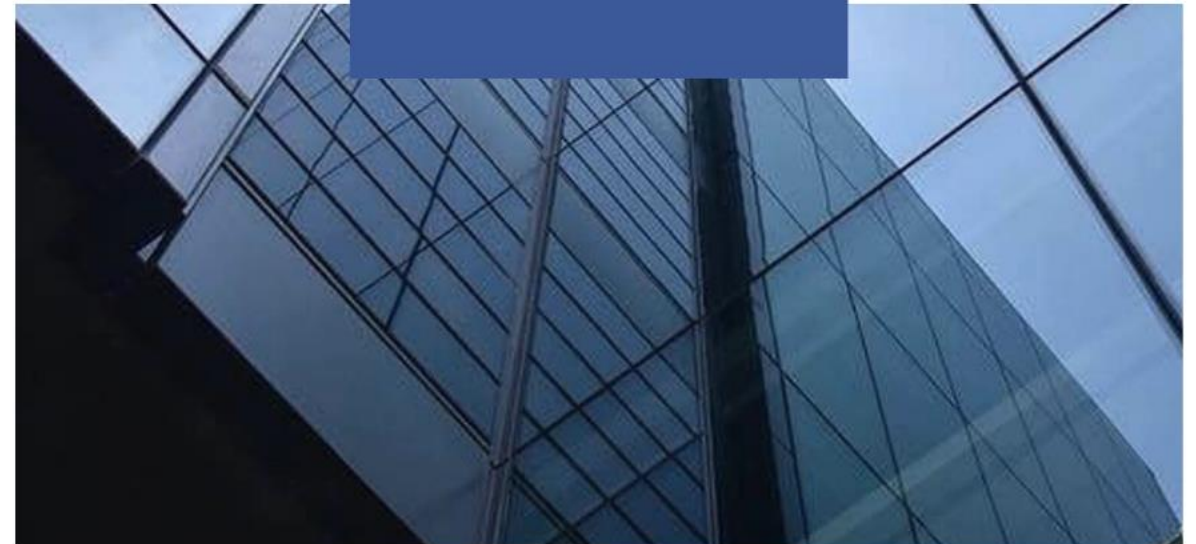
JEFFREY SWARTZ

Executive Director (Camden County Workforce Development Board)

Partnership Between Camden County Workforce Development Board & Camden County College



PRESENTATION

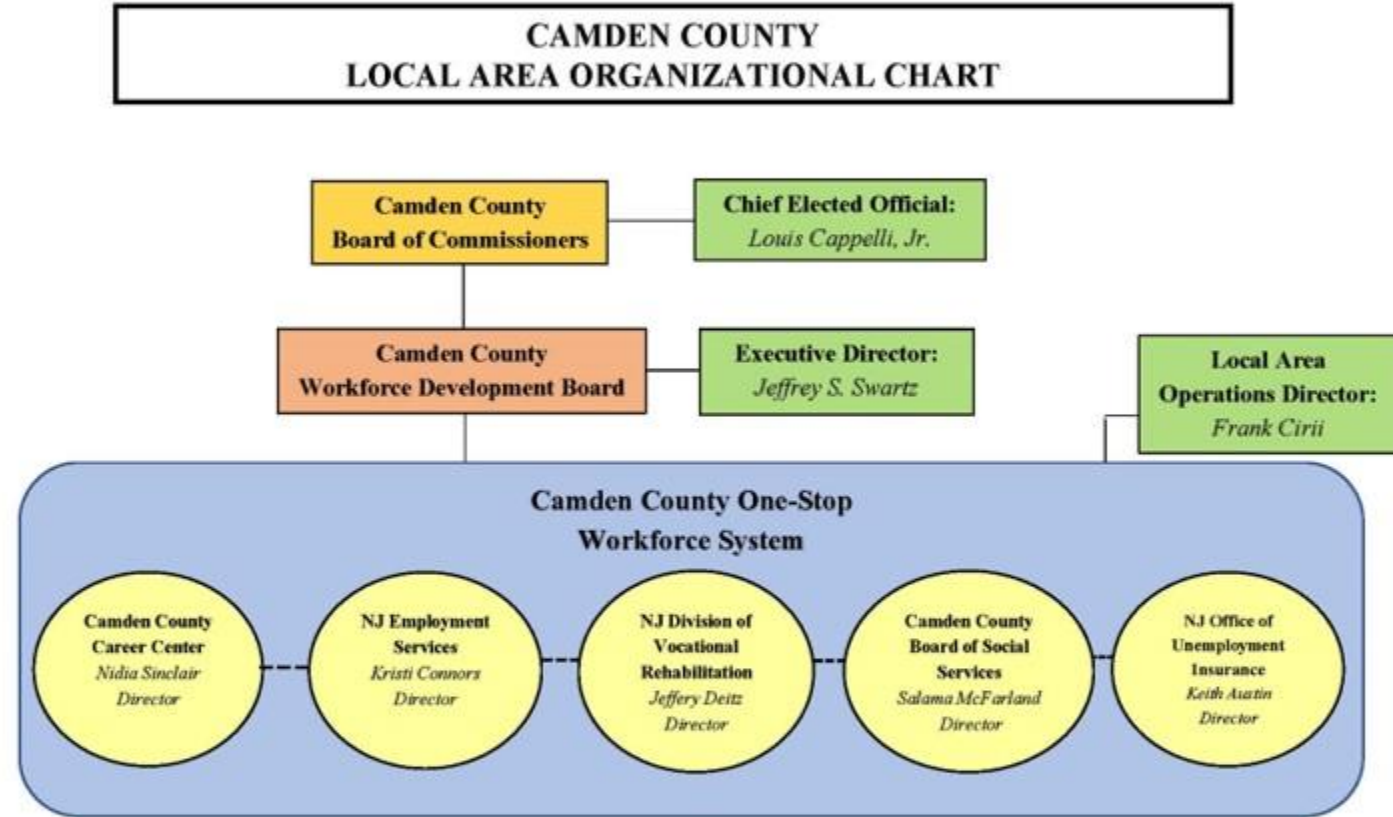




camden  county
WORKFORCE DEVELOPMENT BOARD

Who are we?

A partnership of representatives from the public and private sector who provide the coordinated planning, oversight and policy guidance for the workforce development system in Camden County



What do we do?



We serve to understand the needs of those job seekers and employers who can benefit from our many resources such as *career counseling, assessments, employer hiring recruitments, training opportunities, certifications in demand occupations, individual employment plans and job search support.*



Why do we exist?

IT'S THE LAW

The Workforce Innovation and Opportunity Act (WIOA) was signed into law on July 22, 2014. WIOA is designed to help job seekers access employment, education, training, and support services to succeed in the labor market and to match employers with the skilled workers they need to compete in the global economy.



Camden County College and Workforce Development Board Partnership Programs



**Incumbent
Worker
Training**

camden **county**
WORKFORCE DEVELOPMENT BOARD

**CAMDEN
COUNTY
COLLEGE**



**atlantic city
electric**SM

AN EXELON COMPANY

Atlantic City Electric Program

Quick Path to an Energy Career



Fossil Fuels

Coal, Oil and Gas

Transmission Distribution

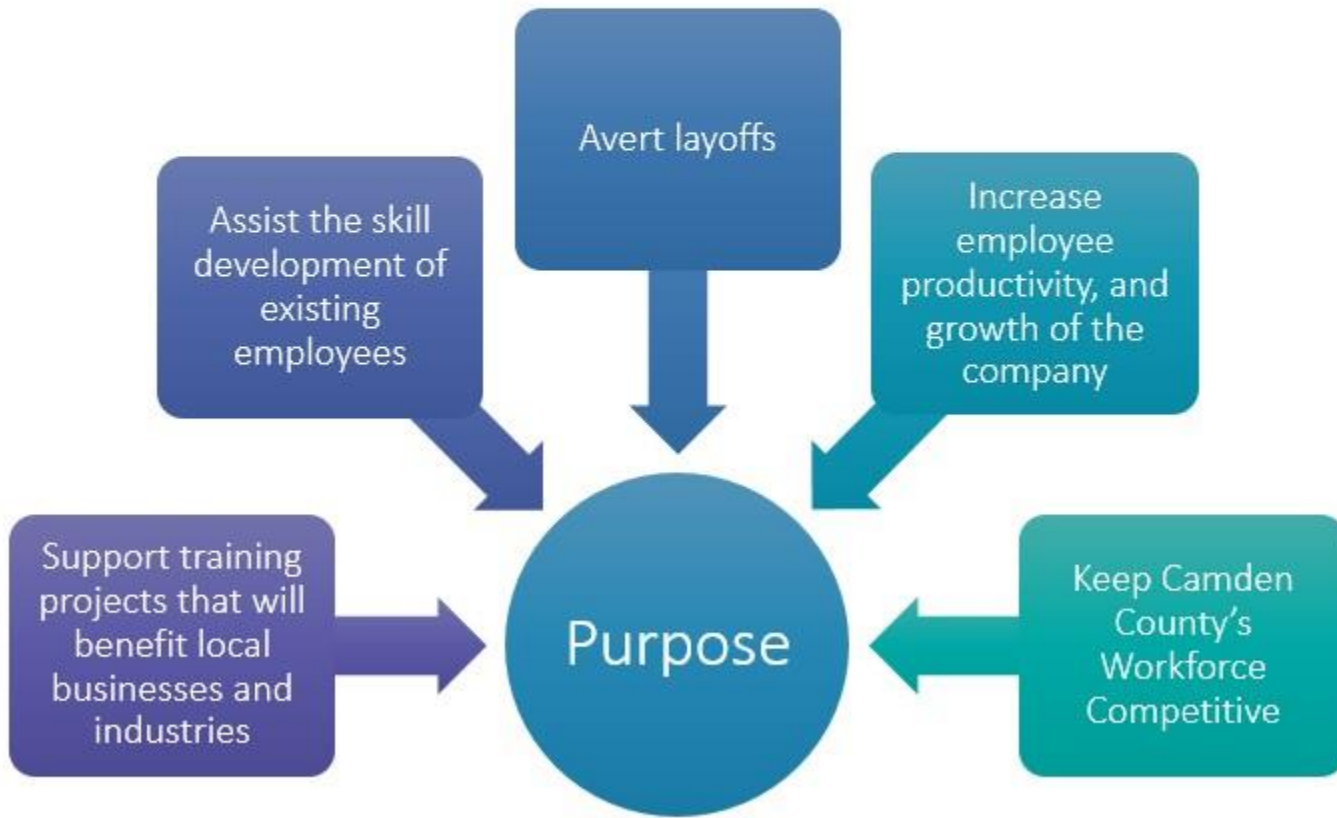
Renewable Energy

Wind, Solar, Geothermal, Biofuel, Hydropower

Low Emissions, Reliable, Low Cost to Operate



Incumbent Worker Training



camden  county
WORKFORCE DEVELOPMENT BOARD

Closing Remarks

Thank you for Partnering with **NJ's Community Colleges** and the **New Jersey Business and Industry Association** to Align Education to Build an Innovative Workforce.

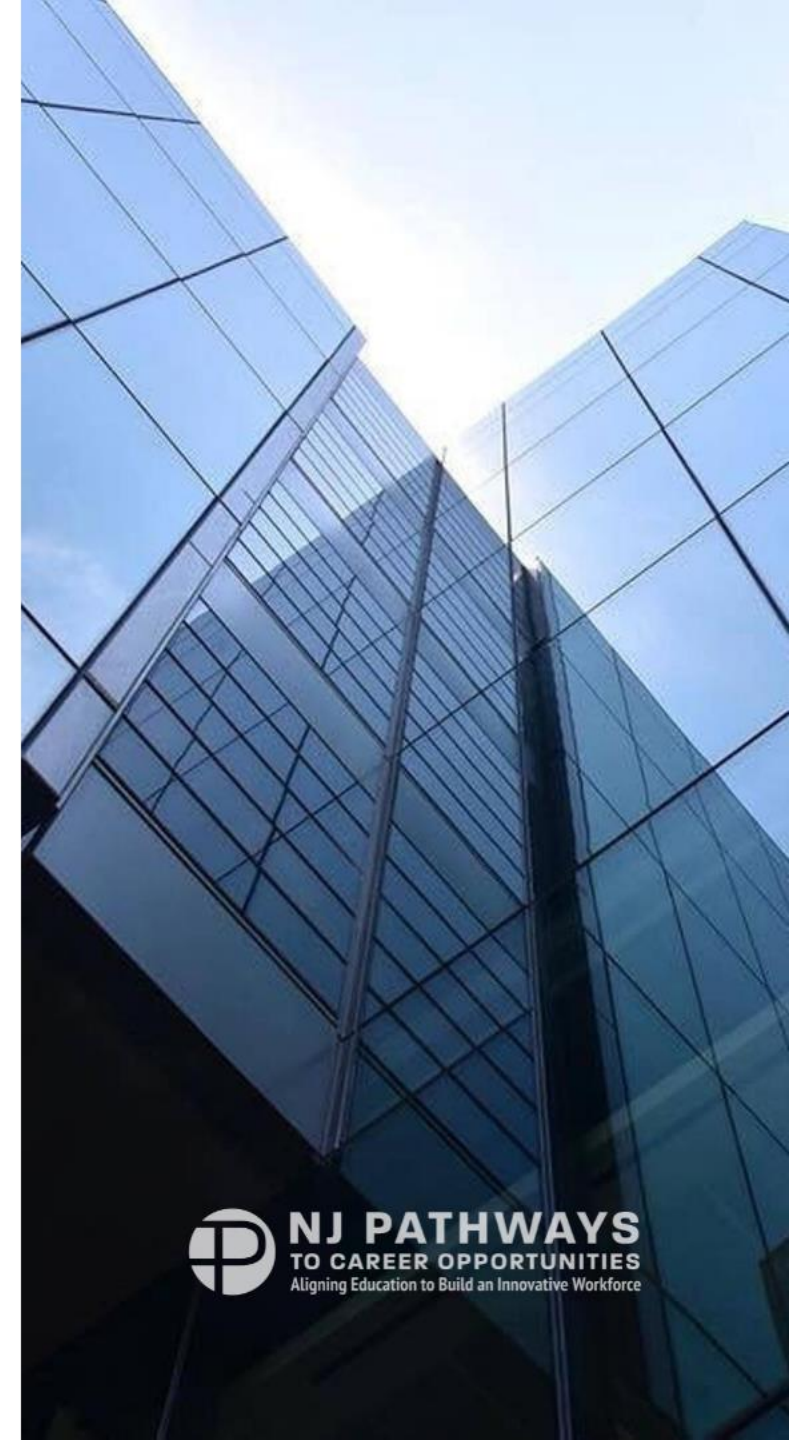


GLENN BEST

Director, Manufacturing and Supply Chain Management
Sectors Strategy & Workforce Partnerships

& JOHN MILLER

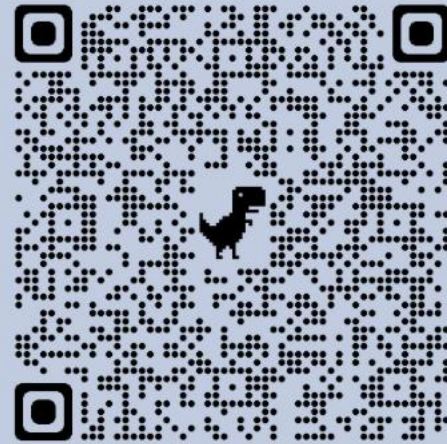
Program Manager, Technology and Innovation/Manufacturing and
Supply Chain Management Sectors Workforce Partnerships



Give Us Your Feedback



FILL OUT THIS QUICK SURVEY
BASED ON YOUR EXPERIENCE
OF THIS MEETING



NJ PATHWAYS
TO CAREER OPPORTUNITIES
Aligning Education to Build an Innovative Workforce

Contact NJ Pathways

Get Involved



**GET
INVOLVED**



STAY UP TO DATE AT NJPATHWAYS.ORG

Get involved in NJ Pathways to Career Opportunities at NJPathways.org. Become a partner to receive updates, meeting invitations, and other materials.

Stay Connected

Never miss an update when you follow us on our social media platforms



@NJCommColleges



@NJ Community Colleges



@NJCommColleges



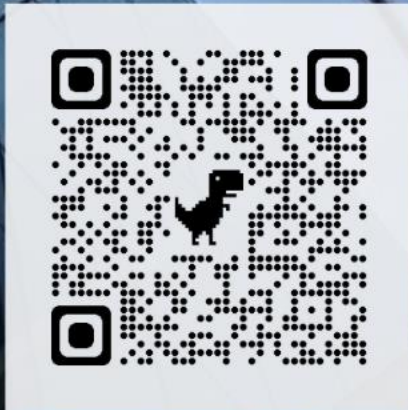
@NJCommColleges



@NJCommColleges

FOLLOW US

STAY INVOLVED: UPCOMING MEETING DATES IN JUNE 2022



TECHNOLOGY & INNOVATION COLLABORATIVE

Wednesday, June 15, 2022
10:00 AM to 11:00 AM



HEALTH SERVICES COLLABORATIVE

Wednesday, June 22, 2022
10:00 AM to 11:00 AM



INFRASTRUCTURE & ENERGY COLLABORATIVE

Wednesday, June 29, 2022
10:00 AM to 11:00 AM



MANUFACTURING & SUPPLY CHAIN MANAGEMENT COLLABORATIVE

In Person!

Wednesday, July 6, 2022
11:00 AM to 1:00 PM





NJ PATHWAYS
TO CAREER OPPORTUNITIES
Aligning Education to Build an Innovative Workforce

LET'S GET BACK TO

IN-PERSON COLLABORATION

Join us in person as we convene Industry and Education Partners in the **Manufacturing & Supply Chain Management Sector** together to align education to build an innovative workforce.

7/6/2022
11 AM-1 PM

**PRESENTATIONS &
NETWORKING LUNCH**

HOSTED BY INDUSTRY EXPERT:



GLENN BEST
MANUFACTURING & SUPPLY
CHAIN MANAGEMENT



NJ PATHWAYS
TO CAREER OPPORTUNITIES
Aligning Education to Build an Innovative Workforce

Thank you for Partnering with NJ's Community Colleges and NJBIA to Align Education
to Build an Innovative Workforce.